

**DEEPAK**

CYBIT

# DEEPAK CYBIT PVT. LTD.

We Help You Transform Organisations to be data-amicable - Create, structure, analyse and take advantage of your data.



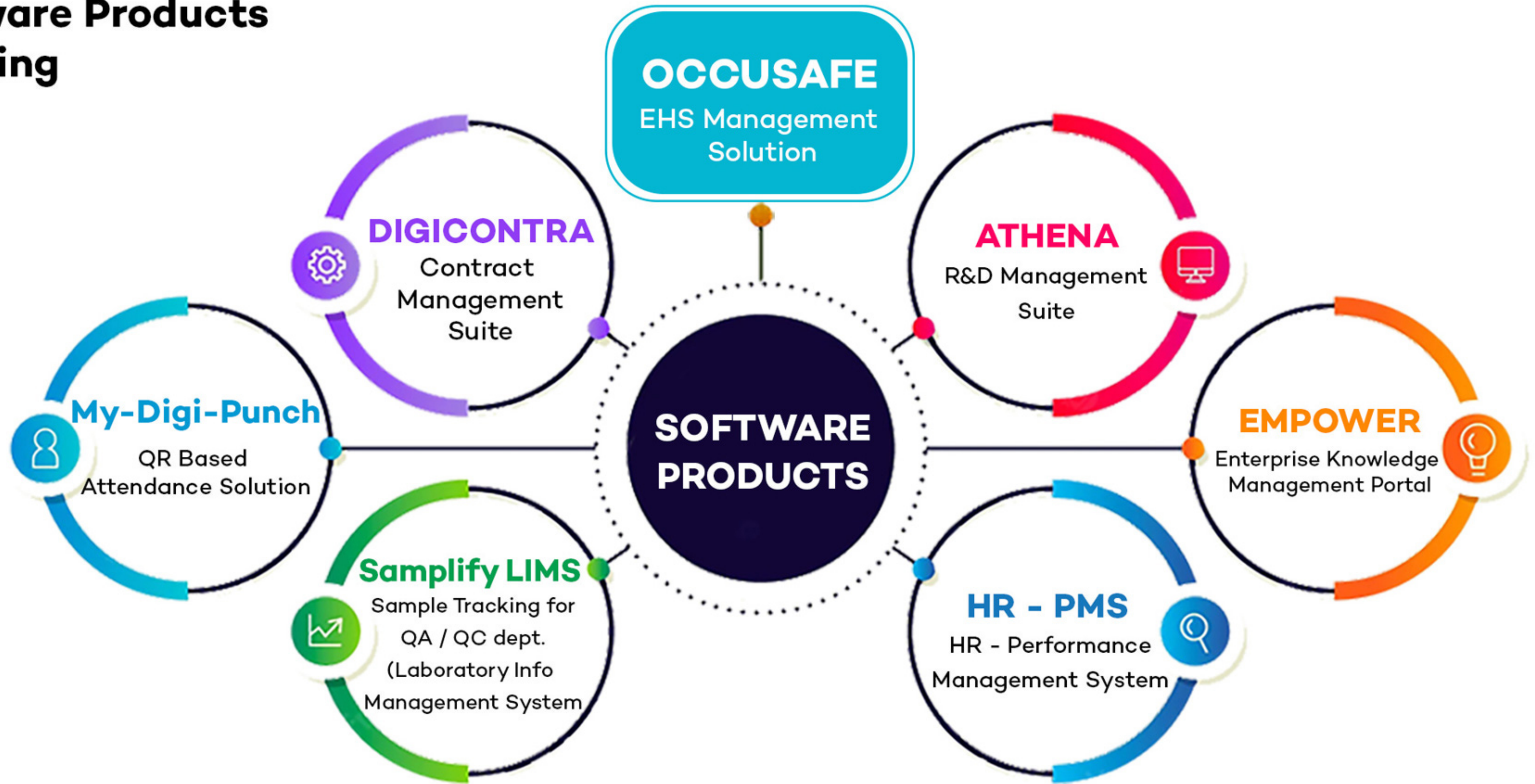
Alkyl Amines Chemicals Limited



## ABOUT US

- Part of the “DEEPAK GROUP”
- Software Development (Web/App/Enterprise) Company established in 2016
- UI/UX Design and Prototyping to the actual development, Quality assurance, Post-project Maintenance and Support.
- Ready to use Industry & Department specific customizable solutions

# Software Products Offering



DEEPAK

CYBIT

# Athena

Idea to Plant

# Problem Statement

- i. A Growth oriented company like Deepak Nitrite is always looking to optimize its performance. Be it by process improvement or better business by various means, the company always strives to grow. In this endeavor, DNL analyzed many factors which hampered its growth and one important result of the analysis was **“Knowledge Loss”**
- ii. Knowledge loss is a very serious concern for any organization since its value is difficult to estimate but its consequences are wide ranging and can often be very serious

iii. Loss of knowledge happens due to various reasons like :

- *Different priorities of key stakeholders*
- *Incomplete movement of data across people and departments*
- *Chinese whispers from lack of a consolidated cohesive format of documenting & reporting*
- *Lack of focus & decisiveness*
- *Urgent replacing the important*
- *Employees moving on & undocumented knowledge loss*
- *Data leak with Malicious intentions*
- *Unintentional Data leakage & data corruption*
- *Jumping from one step to the next prematurely*

iv. Thus, DCPL was engaged in using technology to solve the above issue and the solution that was developed was christened "Athena"

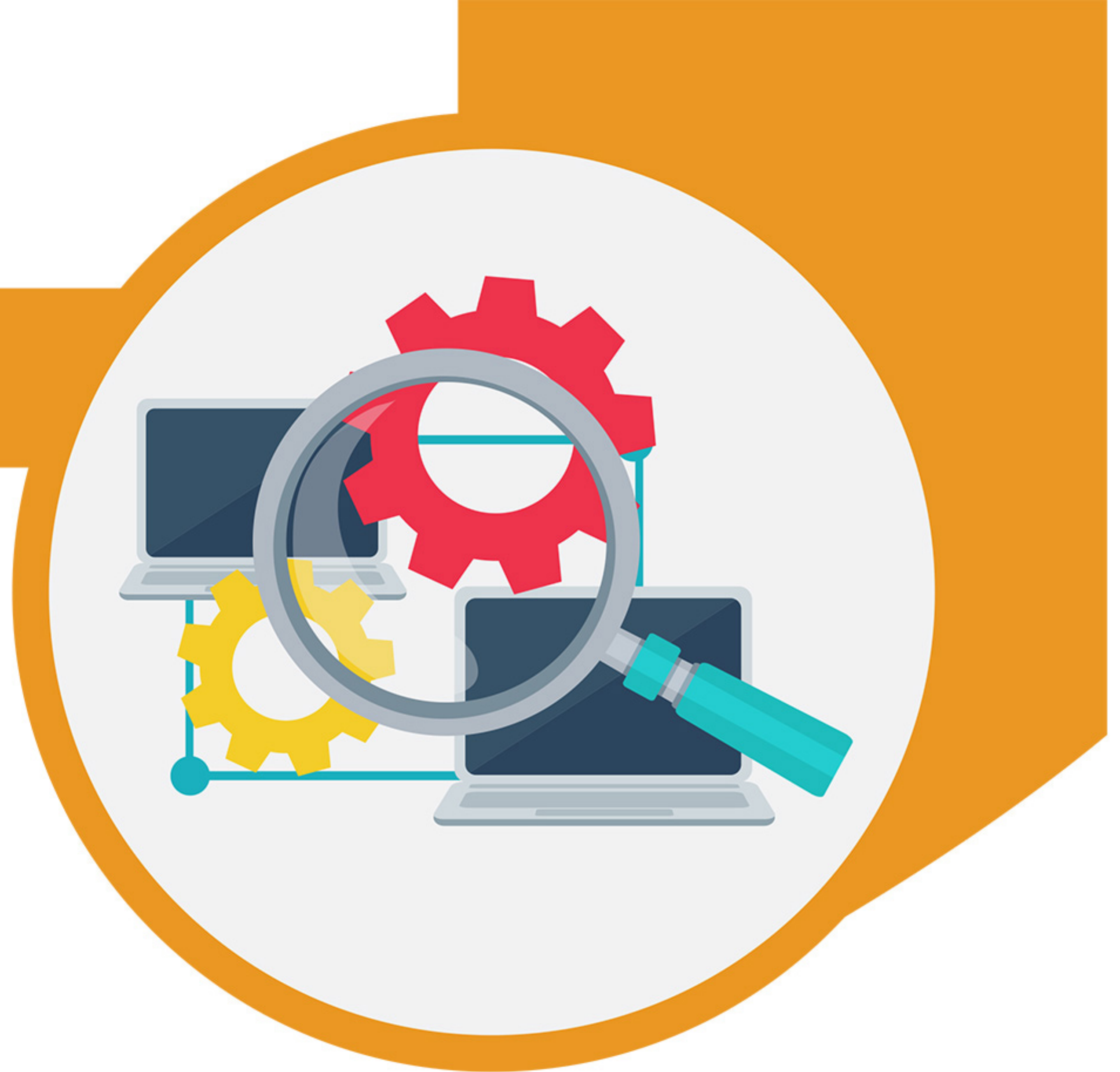


# What is Athena?

---

*Athena enables an organisation to Digitize the "Idea to Plant" progression ensuring no knowledge loss*

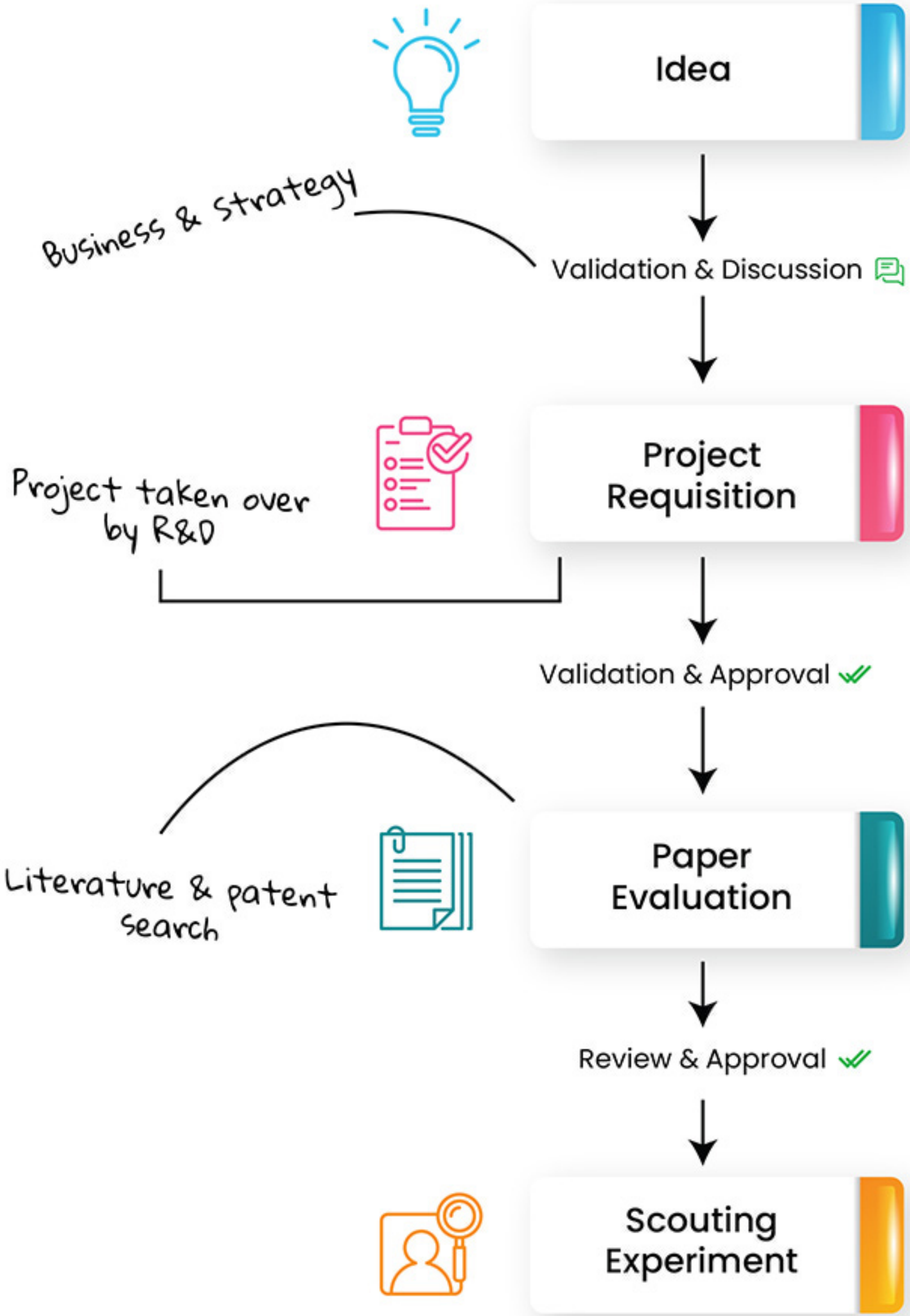
Athena is a highly secure cloud based suite of products aimed at bridging the gap between Board room & other departments by creating curated information flow of data ensuring precise information & timely updates, thereby optimising the overall productivity while capturing unstructured data in a structured manner making it search-able, retrievable & analyzable



# Why Athena?

- Athena is designed keeping in mind one simple principle:  
- ***Allow human intelligence to focus on Growth & machine intelligence to focus on Process Control***
- No matter the size of your company Athena can be adapted to the needs of the organization and is completely customizable to suit your needs
- Traditional Electronic Lab Notebooks focus on recording of experiments and data analysis as an advanced feature but not on creating “readable” reports. Athena uses smart data entry so your scientists can focus on science while you focus on making the right decisions.

# Traditional Idea to Plant Progression



Idea

Validation & Discussion

Project Requisition

Validation & Approval

Paper Evaluation

Review & Approval

Scouting Experiment

Review & Approval

Commercial Trials

Review & Approval

Pilot Trials

Review & Approval

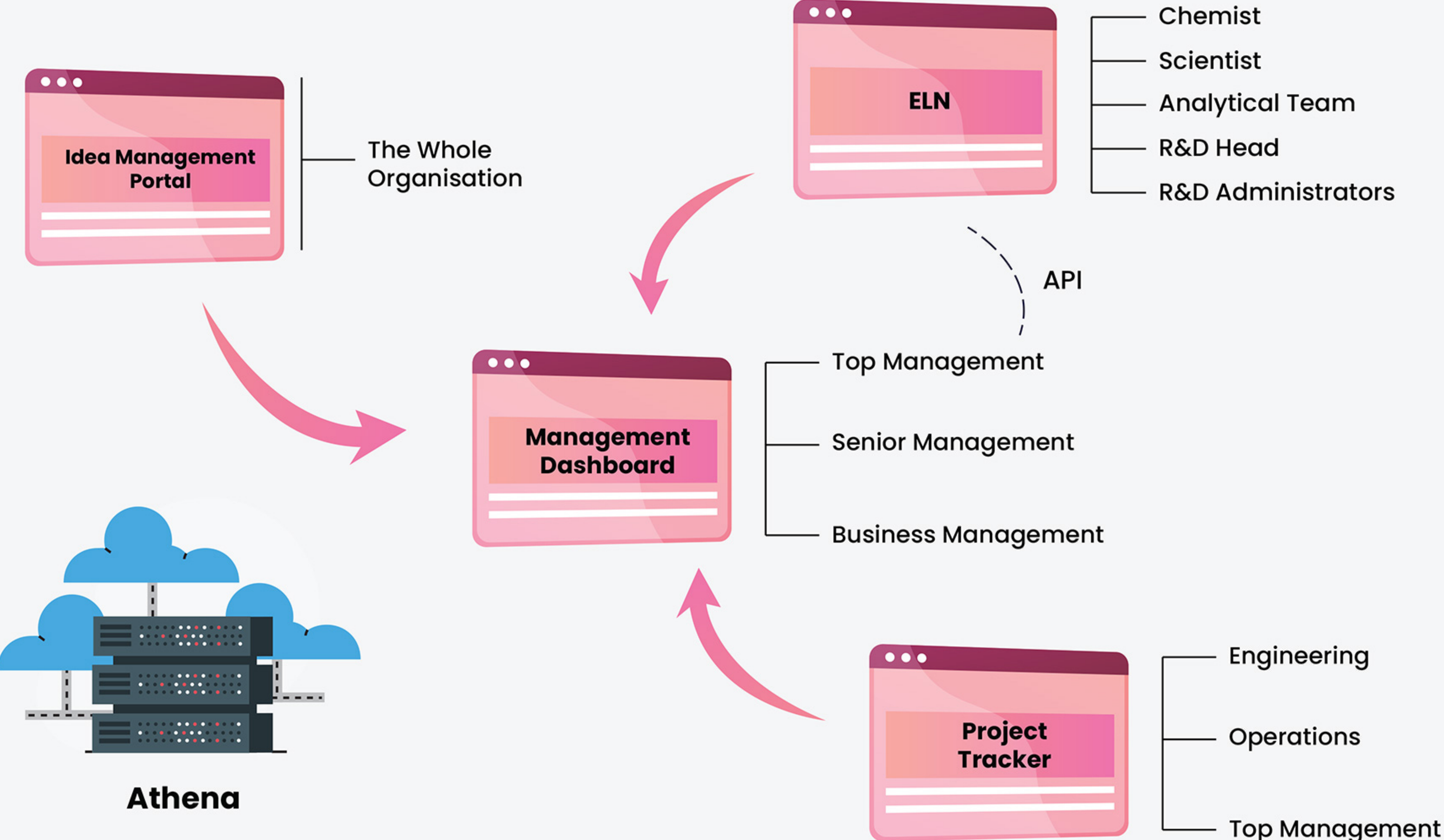
Optimization Experiments

Handover to engineering team

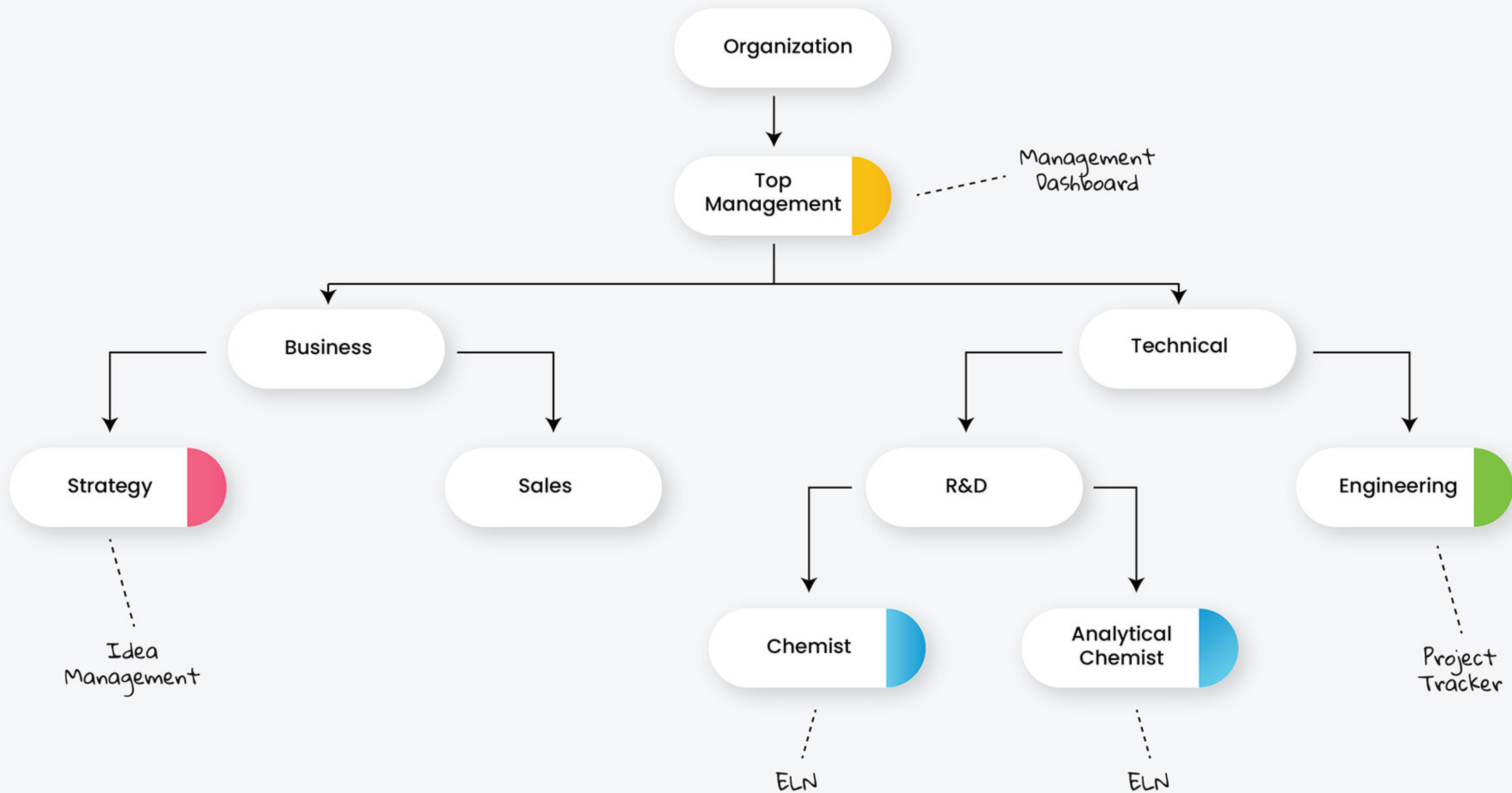




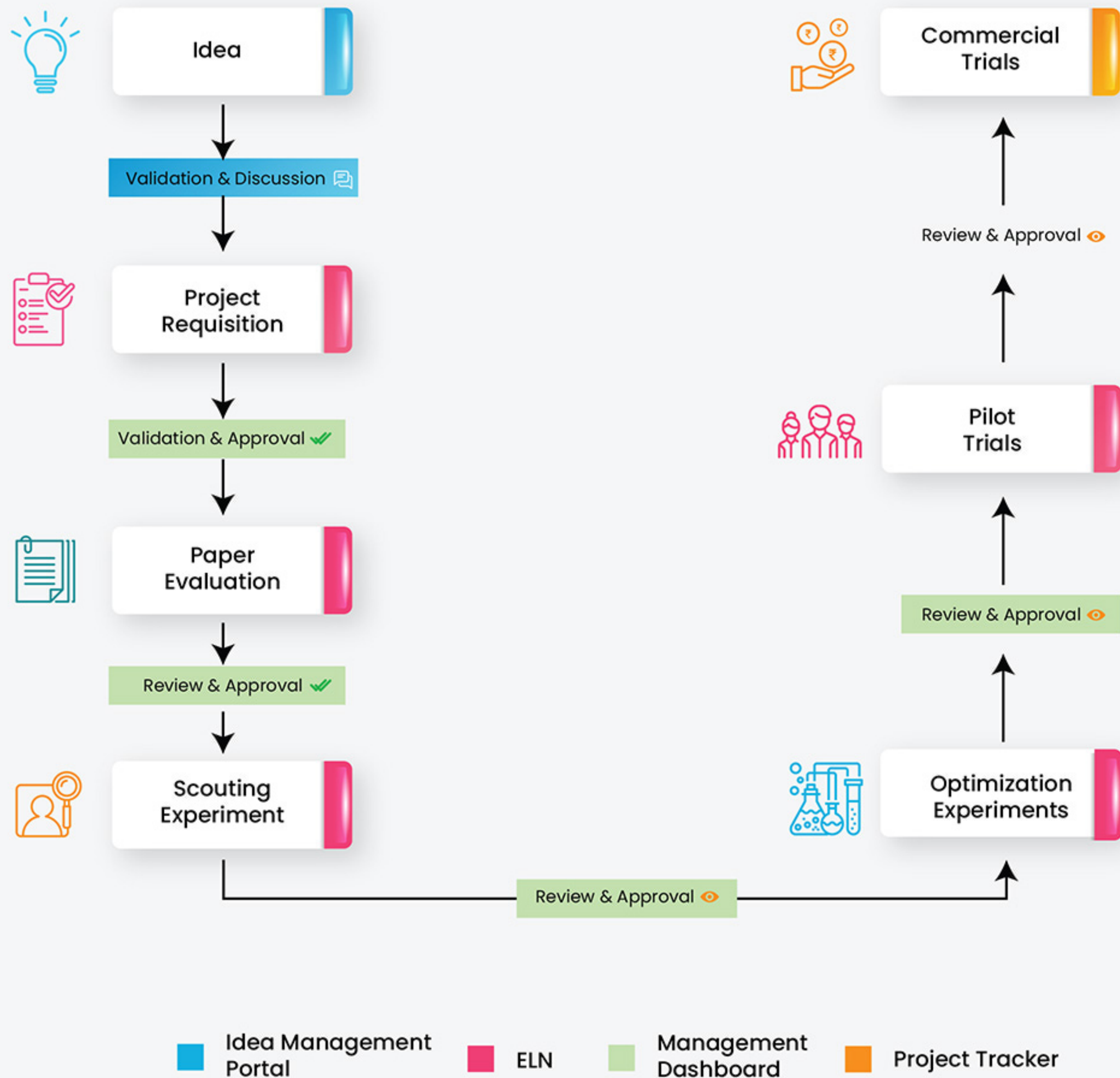
# Athena - Users & Modules



# Mapping of Athena Modules with Roles



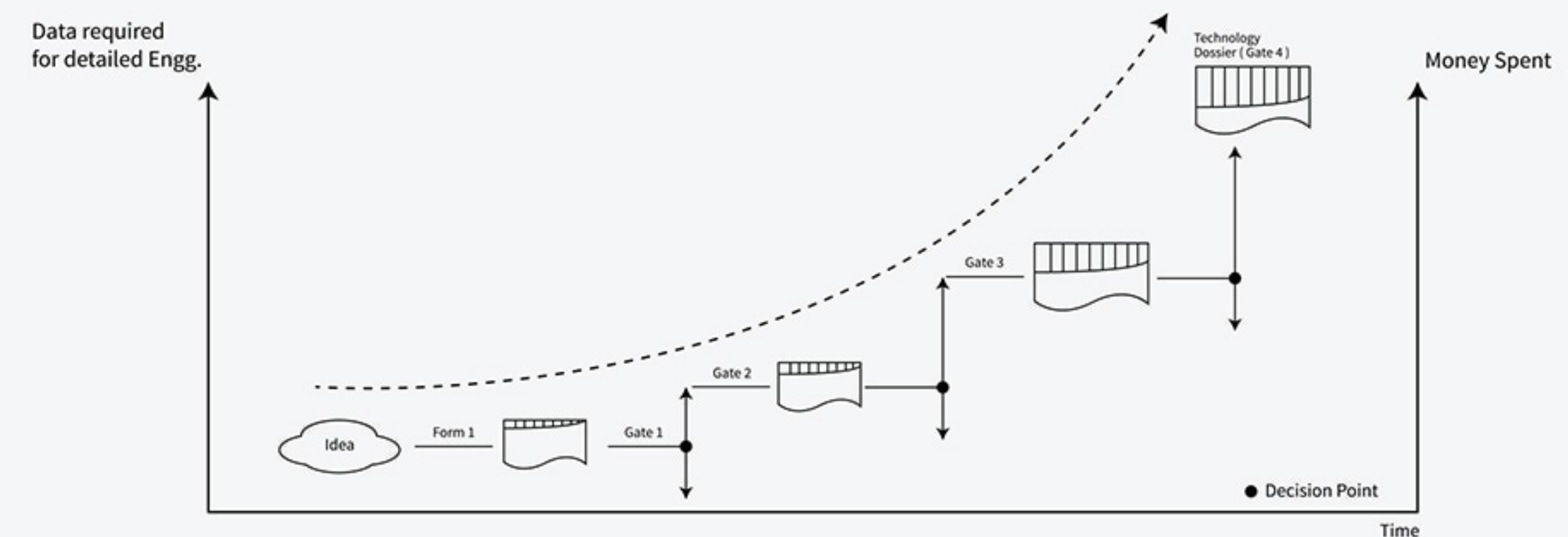
# Mapping of Athena Modules with ITP Stages



We do **NOT** change the normal flow of the company - we customize Athena to adapt to it and make it more efficient.

## Stage Gate Concept

- Know your end point
- Generate critical data first
- Build knowledge stepwise
- Kill project as early as possible



**Athena** is very secure and very stringent about security requirements. **YOUR** data remains with you forever and you can get your data whenever you want, in the format you want without any charges or hassle.

Athena ships with a set of standard security features as listed below:

- **256 Bit SSL** based encryption when deployed on cloud.
- Data encryption at rest. Thus even if someone has access to the server, the data is encrypted and without **decryption keys**, cannot be accessed
- **Restricted access** to the server. Even if Cybit wants to access server, we use the keys present with YOUR IT department with trail and permission of reason to access server.
- Cybit never views your data. **YOUR** data is your property and our developer team will have access only to the **code base and database** access will be restricted to people you authorize!



# Benefits of Athena

i. While all the theory sounds great, it is important to understand why will Athena be useful to you! To answer this, given below are the benefits we observed in DNL which we believe may also be applicable to you

- ▶ After launching the Idea Portal we received more than **75 ideas** in a week. These were already in people's minds; nowhere for them to go. We now have complete control and track of status of all ideas that have come and even rejected ideas have data to backup the rejection mechanism. We recently launched a new product, whose idea was given **3 years ago** by someone in the marketing department and championed by a senior manager who has left us since **6 months!**



The MD of the company, since interested in R&D used to have R&D reviews which lasted for about **3 hours** with **7-10** people. Major time consumption as getting the top management upto the speed on various projects. Using the Management dashboard and real time updates, this time was reduced to **45 mins** with just **2 people**!





Thanks to our powerful templating engine, we are able to involve experience and expertise in designing the lab journal form once and now the scientist knows exactly the data that needs to be captured. The QA and compliance person handles the change management of the templates which can be changed any time by the authorized person! No important data is left uncaptured and no investment decisions are taken only to find out later that HAZOPS or effluent studies were left out.

The scientist used to spend weeks in making a **“good report”** but now due to Athena, the predefined, readable reports are ready instantly as soon as the scientist enters the data!







For the project manager, it is easier than ever to highlight any issues/risks associated using our color-coded updates in project tracker. Every Thursday, there is a project review meeting and only **“Red”** issues are discussed with top management where their support is expected, and others are resolved internally. The **“Green”** issues are discussed simply with a pat on the back.

The occupancy and usage of R&D assets (people, equipment & workstations) is very clearly visible due to our timesheet module. The finance department uses Athena to attribute the cost to necessary cost center and business units. The top management uses the **occupancy modules** to push for new ideas and projects such that R&D is optimally utilized.





The R&D head has a **Bi-weekly technical review** along with external experts as necessary where, our bi-weekly report is presented which is automatically created in Athena ELN module which aggregates data of experiments performed and the scientist are expected to conclude on the results and have a technical discussion with the auditorium.



For the last 5 years, DNL did not add a single new product while continuously investing in R&D. Now with the help of a structured process & focus, the company has a stable of new products it will commercialize over the next 2 years.



**Thank You**

**Rushabh Hathi**  
**Ph : 9769655345**  
**Mail : [rushabh@cybit.in](mailto:rushabh@cybit.in)**